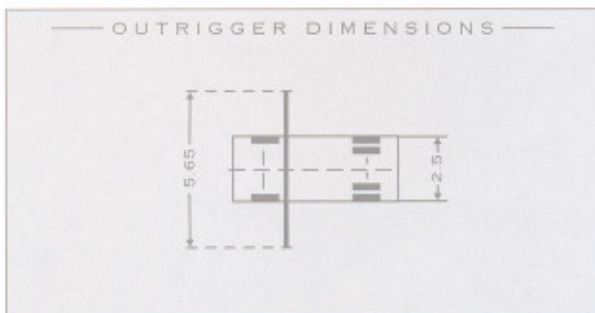
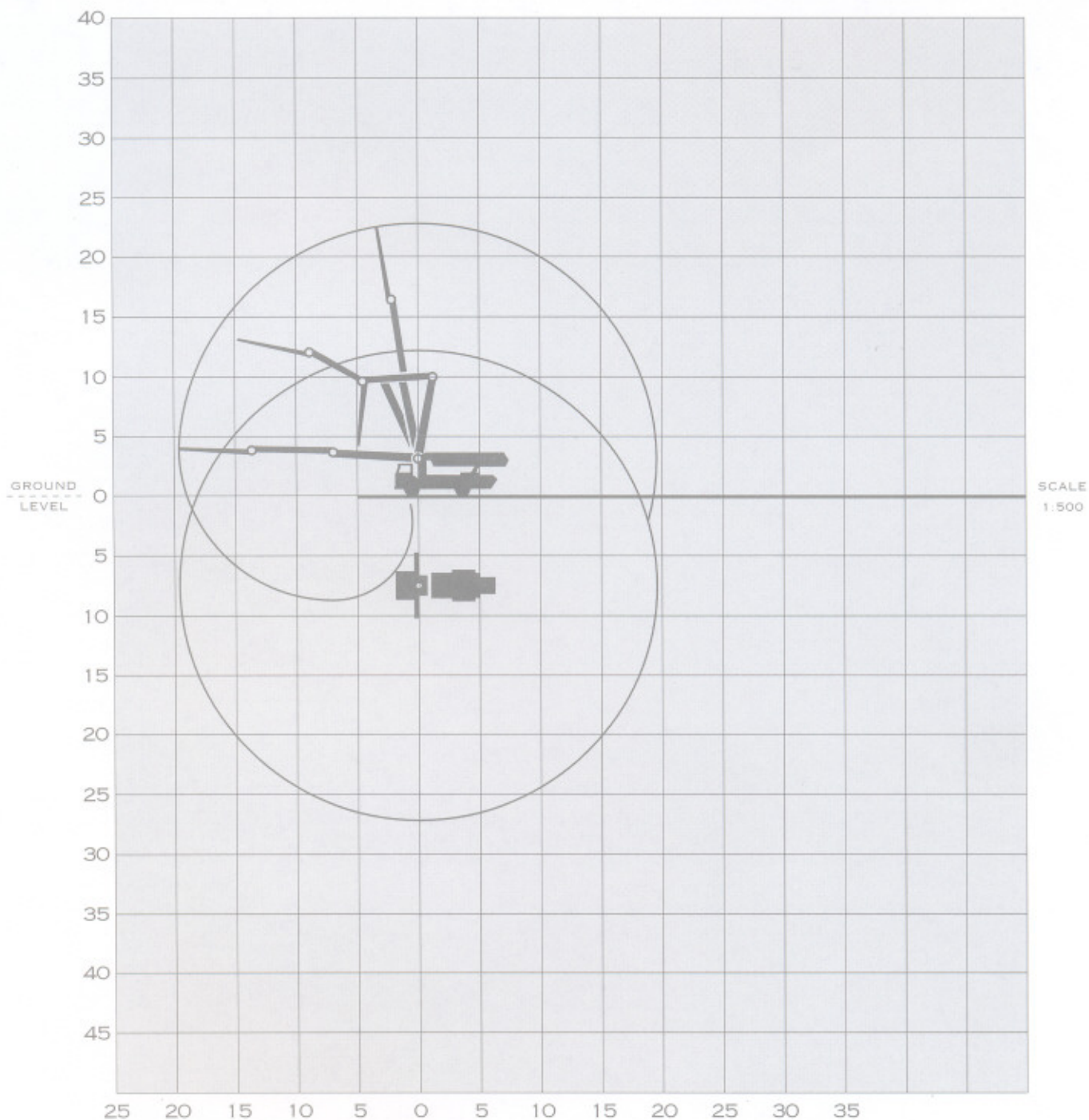


POCHIN M22 BOOM



— TECHNICAL DATA —

UNFOLDING HEIGHT	6.4M
TRAVEL HEIGHT	3.8M
TRAVEL WIDTH	2.5M
TRAVEL LENGTH	9.39M
OUTRIGGER WIDTH	5.65M
OUTRIGGER PRESSURE	9.8 TONNES
GROSS VEHICLE WEIGHT	16.0 TONNES
DISTANCE HOPPER TO GROUND	1.45 M

DUE TO THE PROCESS OF CONTINUOUS DEVELOPMENTS, WE RESERVE THE RIGHT TO ALTER SPECIFICATIONS WITHOUT NOTICE.

POCHIN

concrete pumping

our reputation grows from strength to strength

BROOKS LANE · MIDDLEWICH · CHESHIRE CW10 0JQ · TELEPHONE : 01606 833333

SCOTTISH DIVISION NORTHERN DIVISION NORTH WEST DIVISION CENTRAL DIVISION SOUTH EAST DIVISION SOUTH WEST DIVISION
 BATHGATE 01506 630777 THIRSK 01845 523772 MIDDLEWICH 01606 833333 TAMWORTH 01827 260661 COLNBROOK 01753 882228 PONTYPOOL 01495 769911