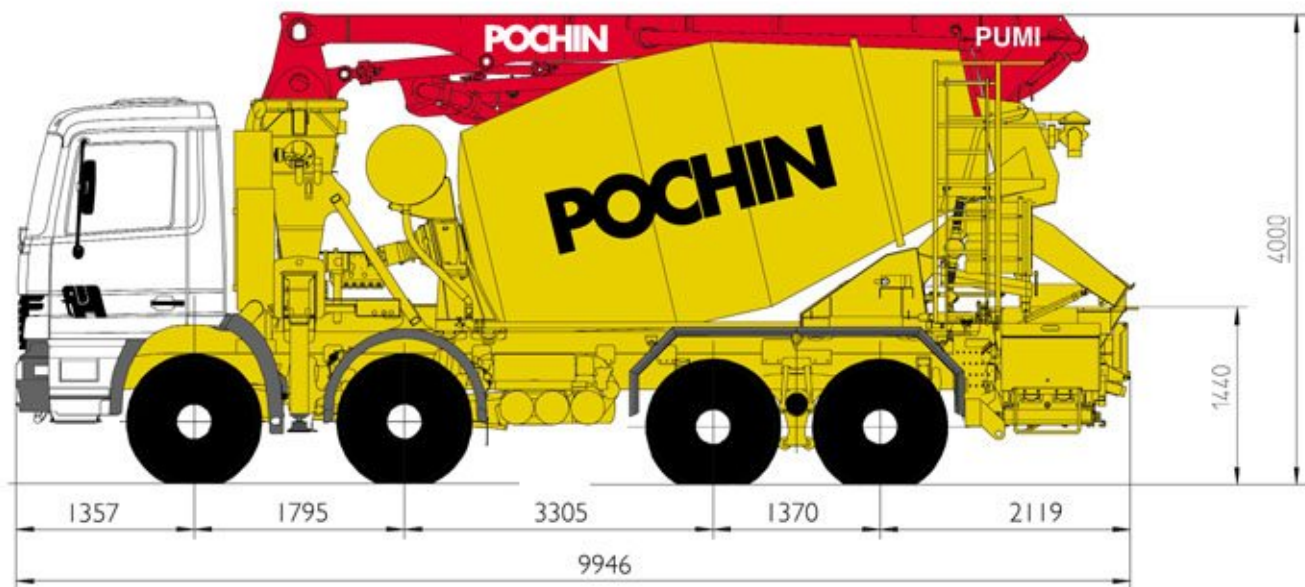


PUMI

21.67CS

Truck-mounted concrete pump with mixer

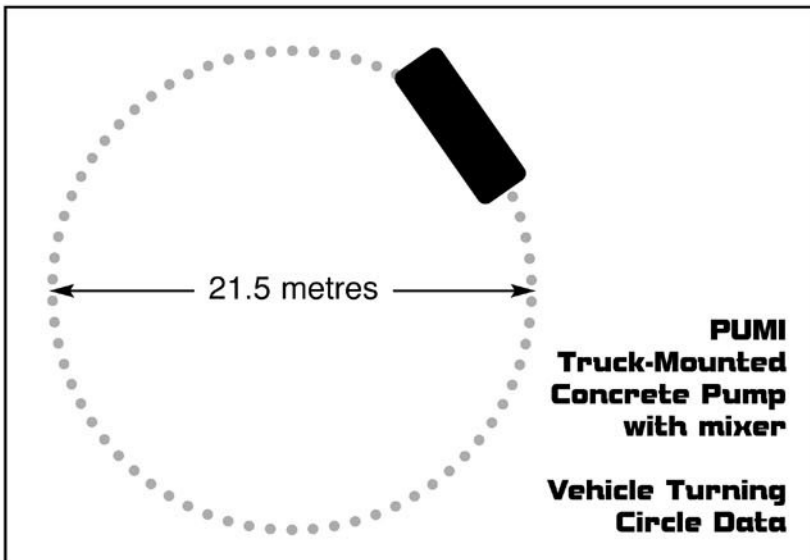
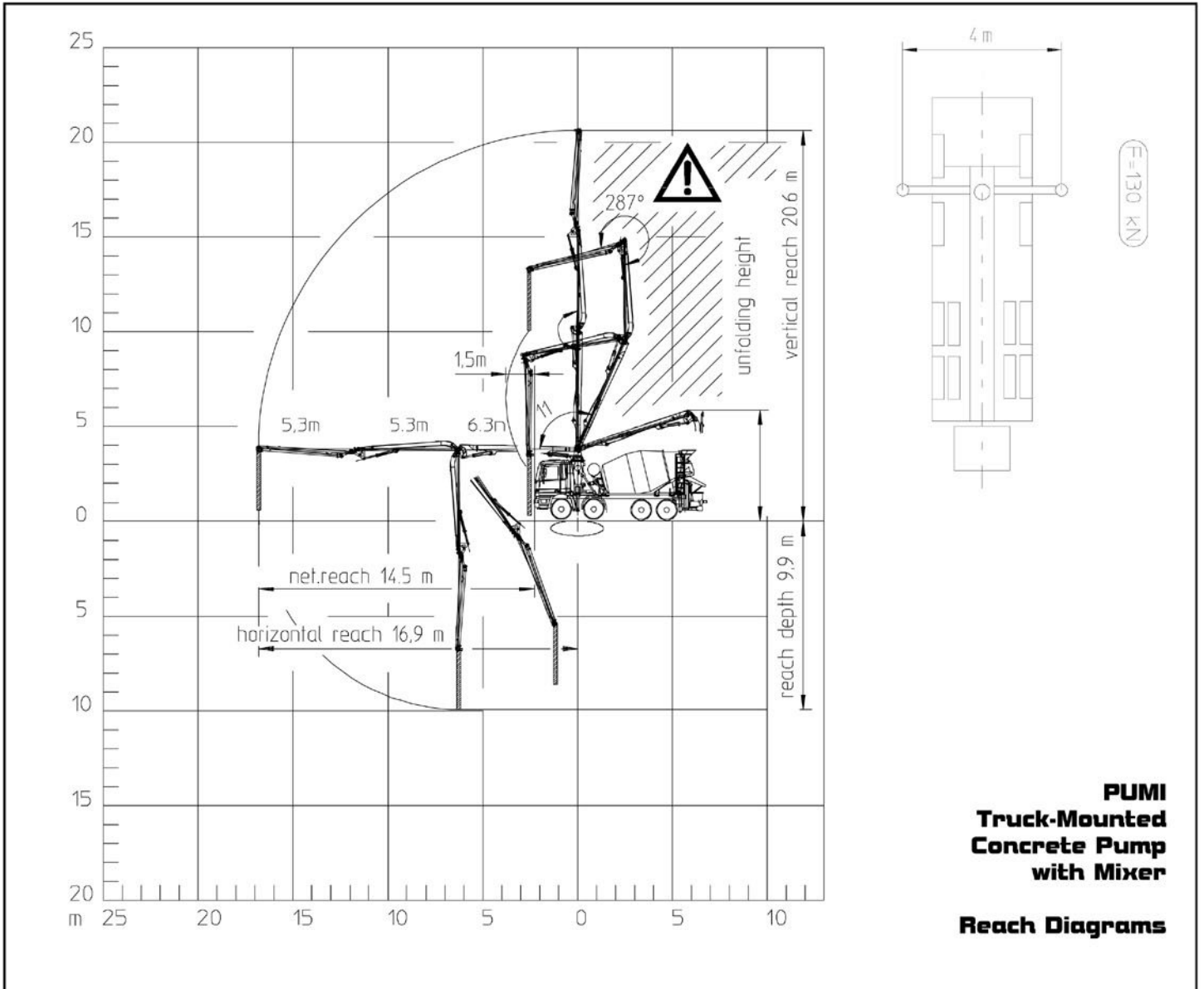


Technical data

Boom		TMM 21	
Reach height	m	20.6	
Horizontal reach	gross	m	16.9
	net	m	14.5
Reach depth max.	m	9.9	
Unfolding height	m	5.6	
Number of arms	3		
Folding system	Z fold (Z)		
Delivery line	DN 100 – 4½ "		

Pump		TMP 60 CS	
Output	m³/h	56	
Delivery pressure	bar	57	
Delivery cylinder	∅ mm	230	
Stroke	mm	700	

PUMI Truck-Mounted Concrete Pump with Mixer



Head Office. Brooks Lane, Middlewich, Cheshire CW10 0JQ

Tel: **01606 833333** Fax: **01606 836027**

Email: pumping@pochins.plc.uk

Web Site: www.pochins.co.uk