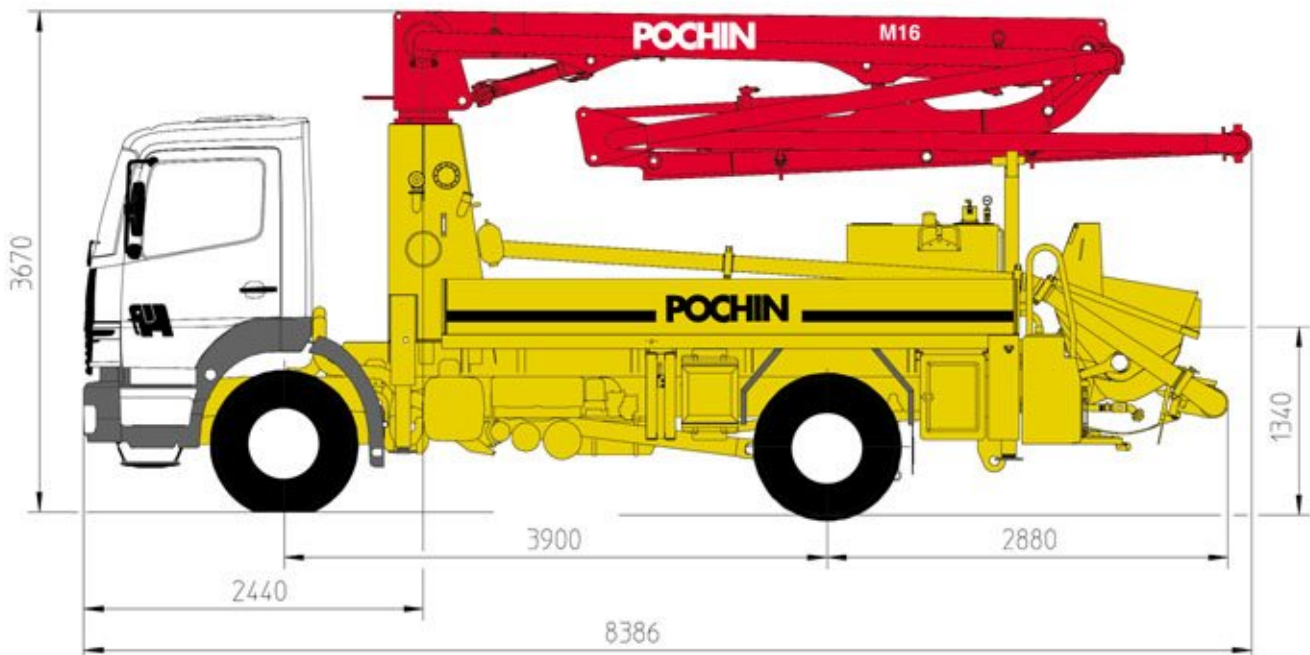


## Truck-mounted concrete pump

## BSF 16.09H

Output up to 90m<sup>3</sup>/h  
Delivery Pressure up to 78 bar



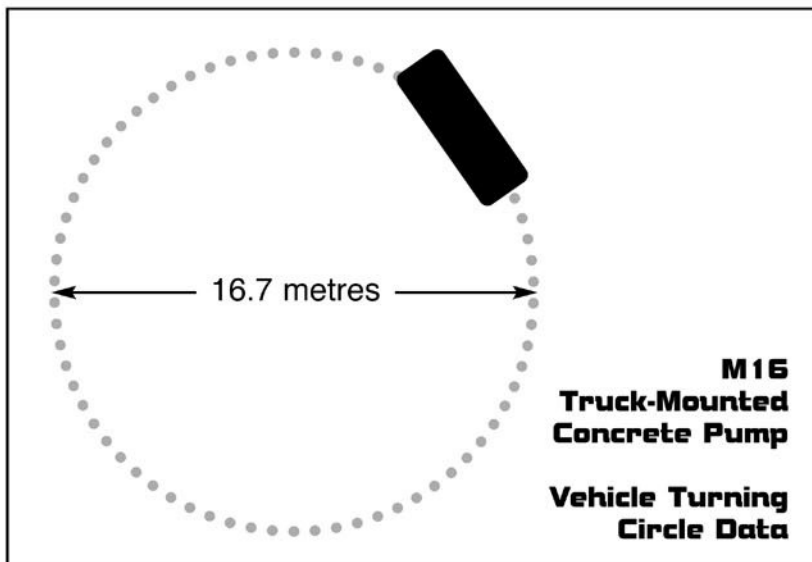
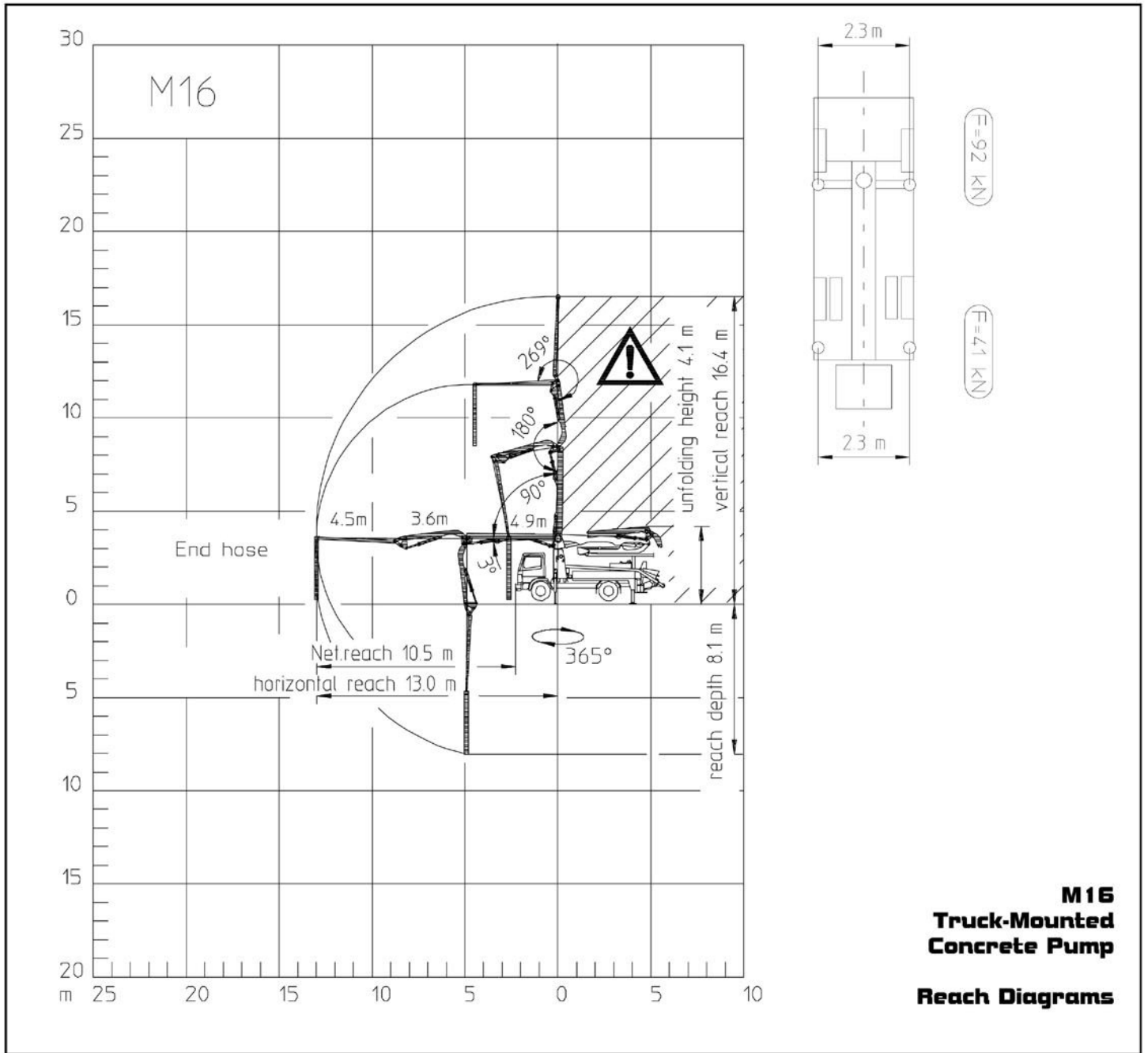
### Technical Data

Boom M 16			
Reach height	m		16.4
Horizontal reach	gross	m	13.0
	net	m	10.5
Reach depth max.	m		8.1
Unfolding height	m		4.1
Number of arms			3
Folding system			Z-fold (Z)
Delivery line			DN 100 – 4 ½ "

Pump		BSF	.09 H
Rod side	Output	m <sup>3</sup> /h	-
	Delivery pressure	bar	-
Piston side	Output	m <sup>3</sup> /h	90
	Delivery pressure	bar	78
	Delivery cylinder	∅ mm	230
	Stroke	mm	1400

Decibel rating 117dB / 114dB  
CE Conformity prEN 12001

# M16 Truck-Mounted Concrete Pump



Head Office. Brooks Lane, Middlewich, Cheshire CW10 0JQ

Tel: **01606 833333** Fax: **01606 836027**

Email: [pumping@pochins.plc.uk](mailto:pumping@pochins.plc.uk)

Web Site: [www.pochins.co.uk](http://www.pochins.co.uk)