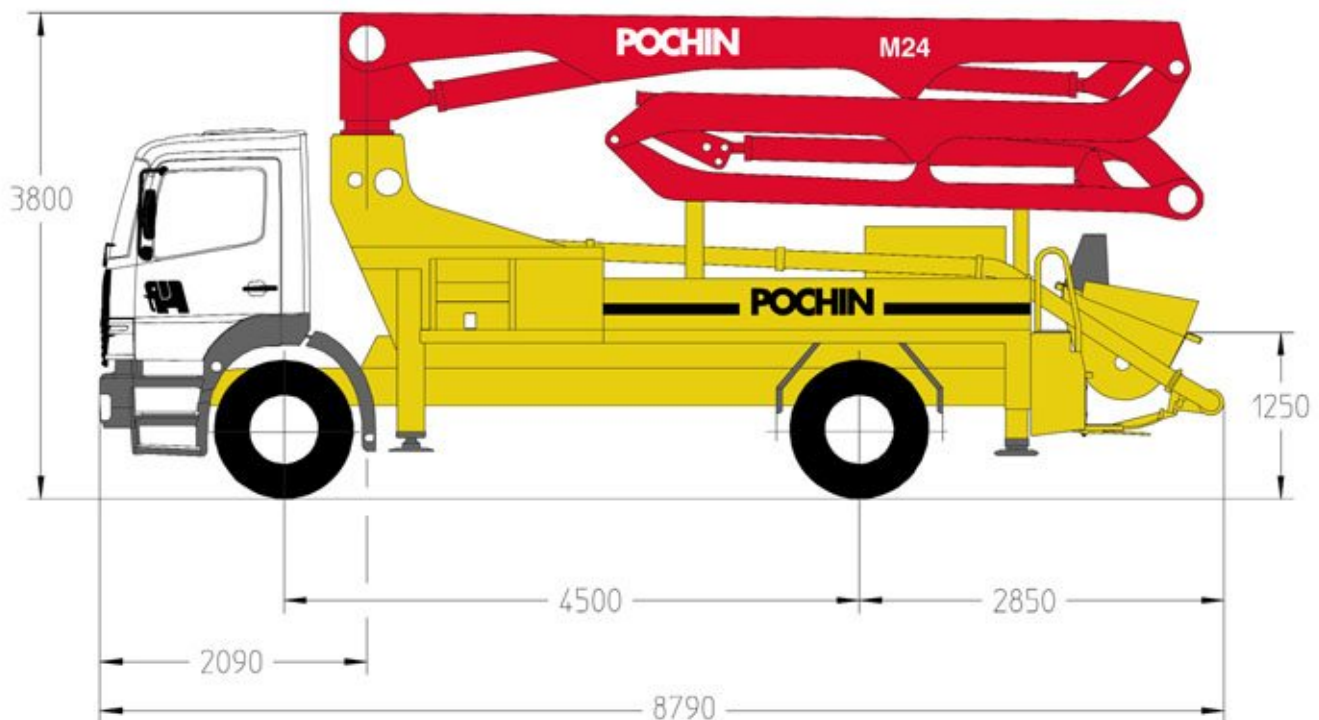


Truck-mounted concrete pump

BSF 24.11H

Output up to 110m³/h
Delivery Pressure up to 78 bar



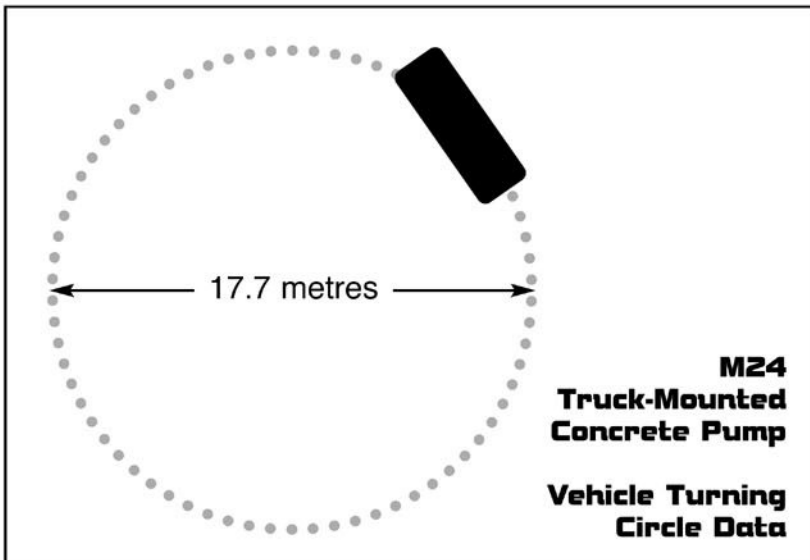
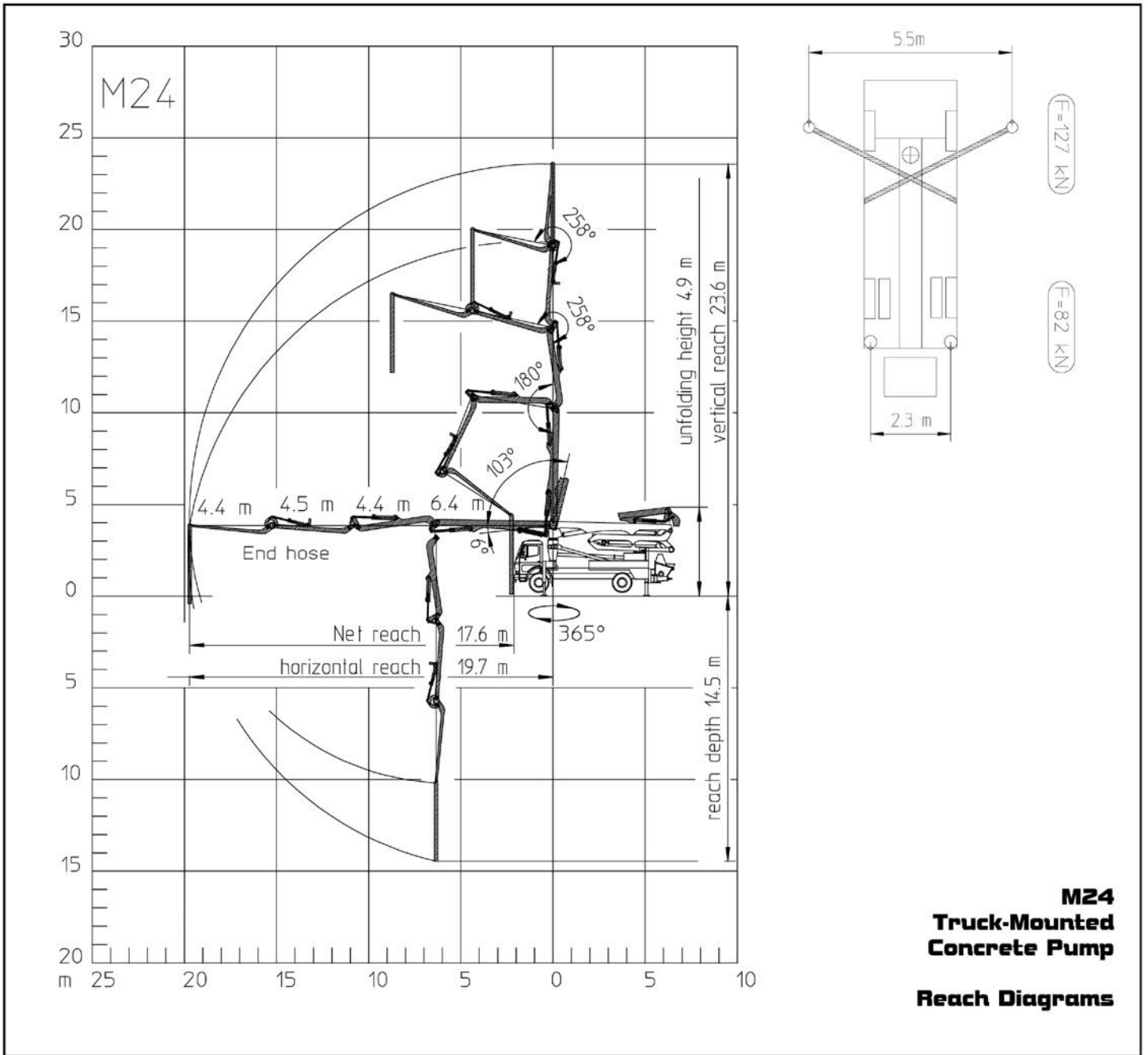
Technical Data

Boom M 24			
Reach height	m	23.6	
Horizontal reach	gross	m 19.7	
	net	m 17.6	
Reach depth max.	m	14.5	
Unfolding height	m	4.9	
Number of arms	4		
Folding system	ZR-fold (ZR)		
Delivery line	DN 125 – 5 ½ "		

Pump		BSF	.11 H
Rod side	Output	m ³ /h	-
	Delivery pressure	bar	-
Piston side	Output	m ³ /h	110
	Delivery pressure	bar	78
	Delivery cylinder	∅ mm	230
	Stroke	mm	1400

Decibel rating 117dB / 114dB
CE Conformity prEN 12001

M24 Truck-Mounted Concrete Pump



Head Office. Brooks Lane, Middlewich, Cheshire CW10 0JQ

Tel: **01606 833333** Fax: **01606 836027**

Email: pumping@pochins.plc.uk

Web Site: www.pochins.co.uk