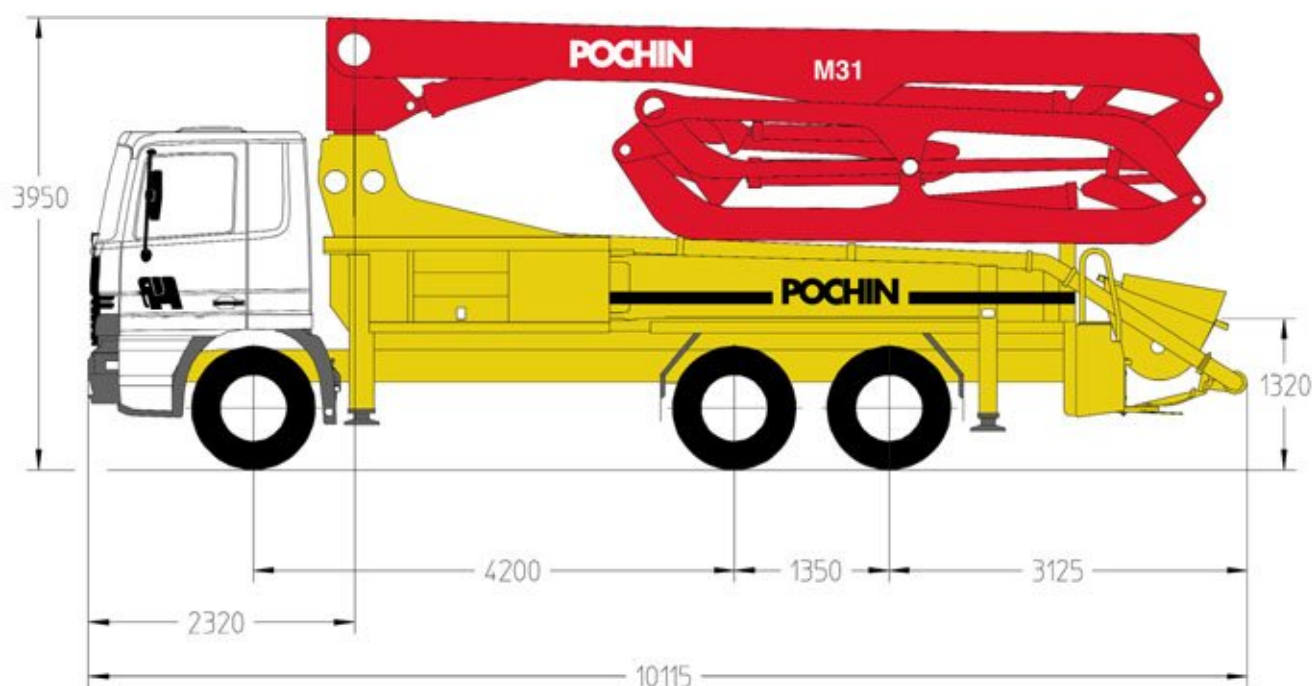


## Truck-mounted concrete pump

## BSF 31.14H

Output up to 140m<sup>3</sup>/h  
Delivery Pressure up to 112 bar



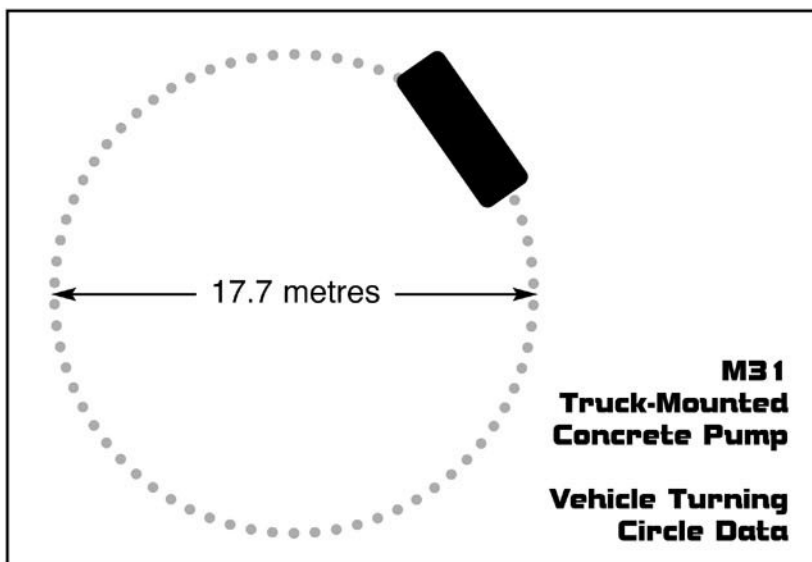
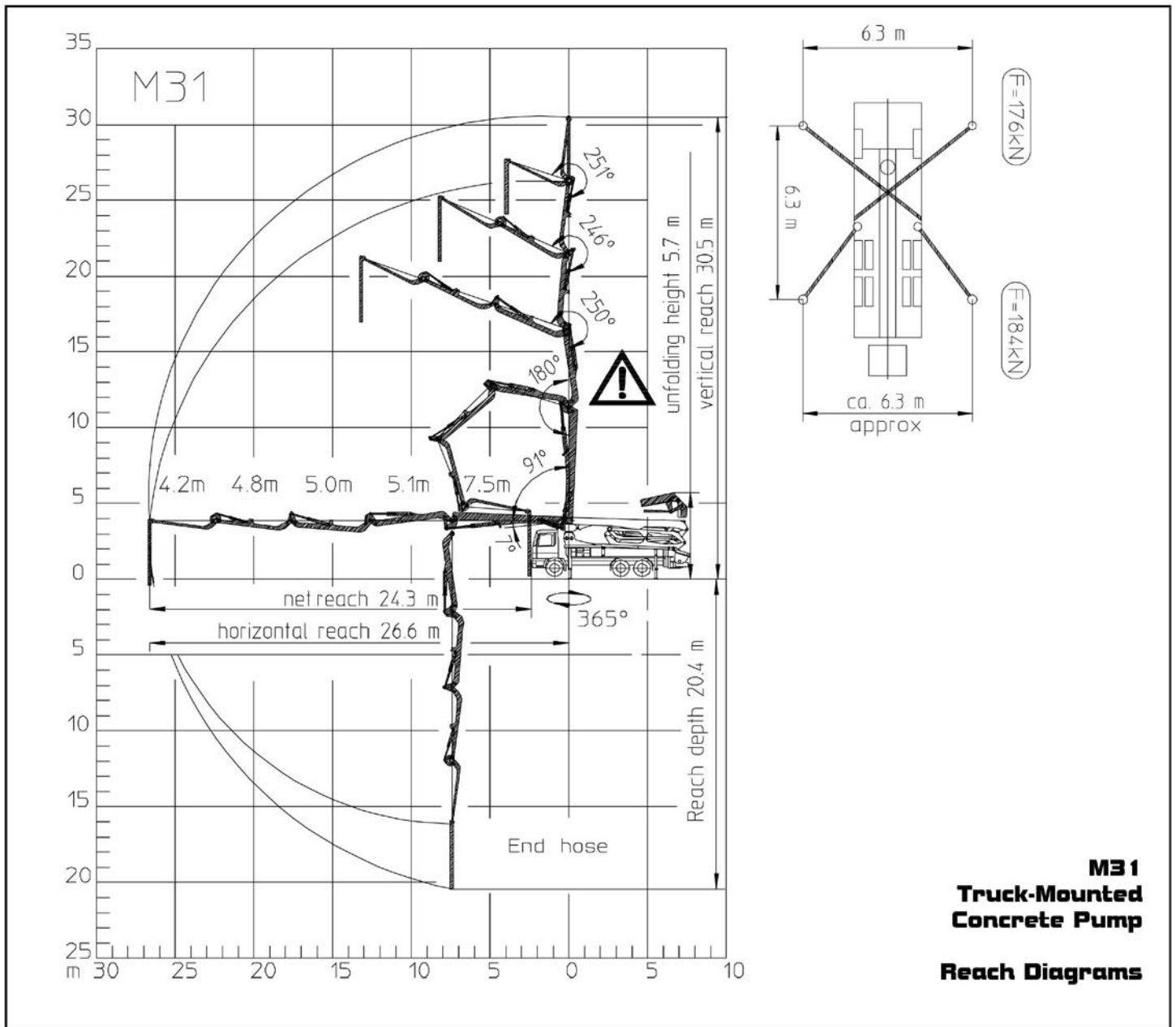
### Technical Data

Boom M 31			
Reach height	m	30.5	
Horizontal reach	gross	m	26.6
	net	m	24.3
Reach depth max.	m	20.4	
Unfolding height	m	5.7	
Number of arms	5		
Folding system	Multi-Z roll-and-fold (MZR)		
Delivery line	DN 125 – 5 ½ "		

Pump		BSF	.14 H
Rod side	Output	m <sup>3</sup> /h	140
	Delivery pressure	bar	70
Piston side	Output	m <sup>3</sup> /h	88
	Delivery pressure	bar	112
	Delivery cylinder	∅ mm	230
	Stroke	mm	2100

Decibel rating 117dB / 114dB  
CE Conformity prEN 12001

# M31 Truck-Mounted Concrete Pump



Head Office. Brooks Lane, Middlewich, Cheshire CW10 0JQ

Tel: **01606 833333** Fax: **01606 836027**

Email: [pumping@pochins.plc.uk](mailto:pumping@pochins.plc.uk)

Web Site: [www.pochins.co.uk](http://www.pochins.co.uk)