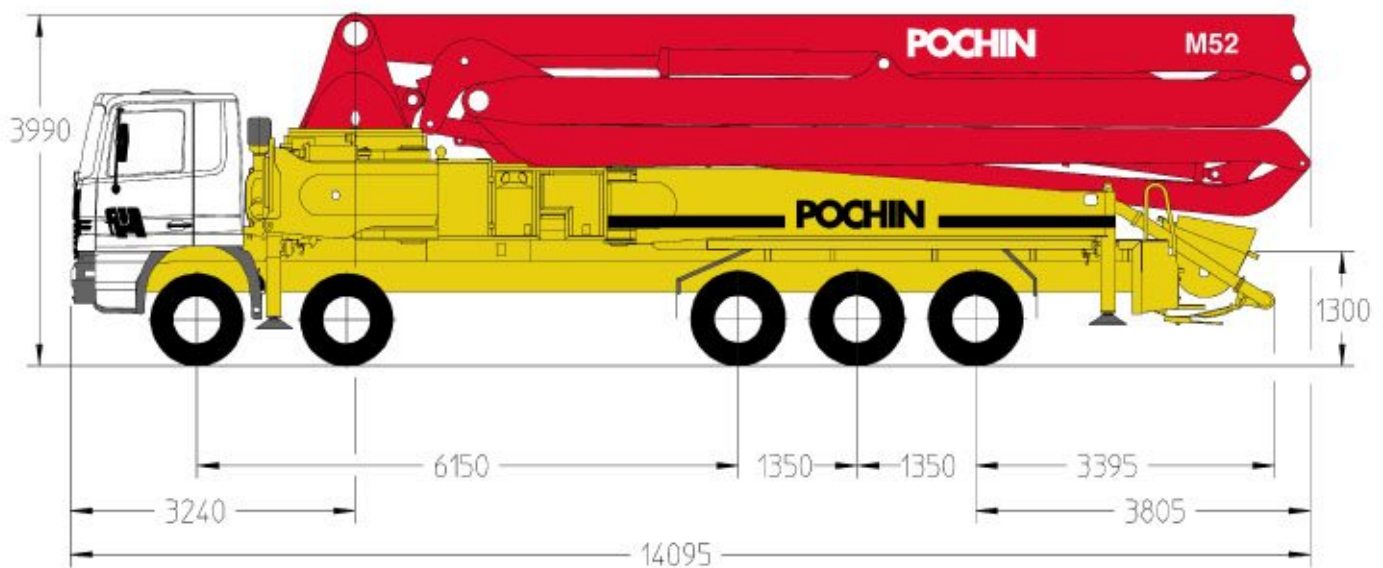


Truck-mounted concrete pump

BSF 52.16H

Output up to 160³/h
Delivery Pressure up to 130 bar



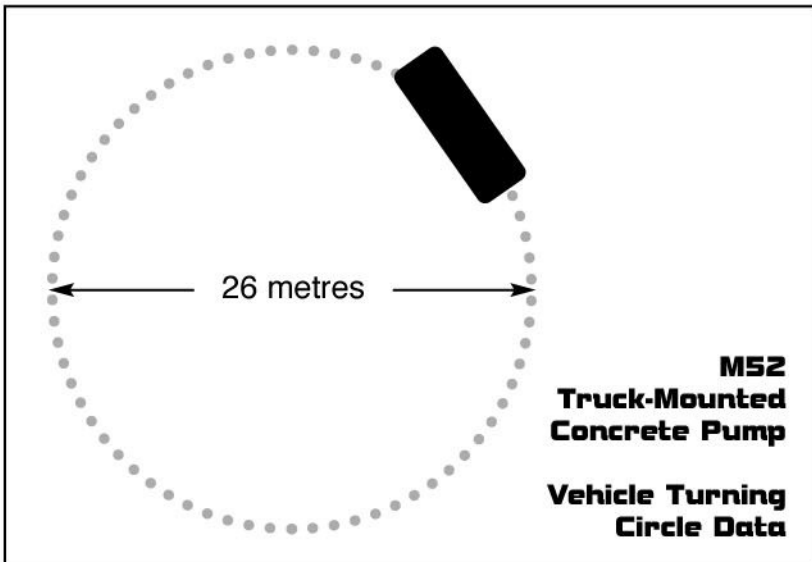
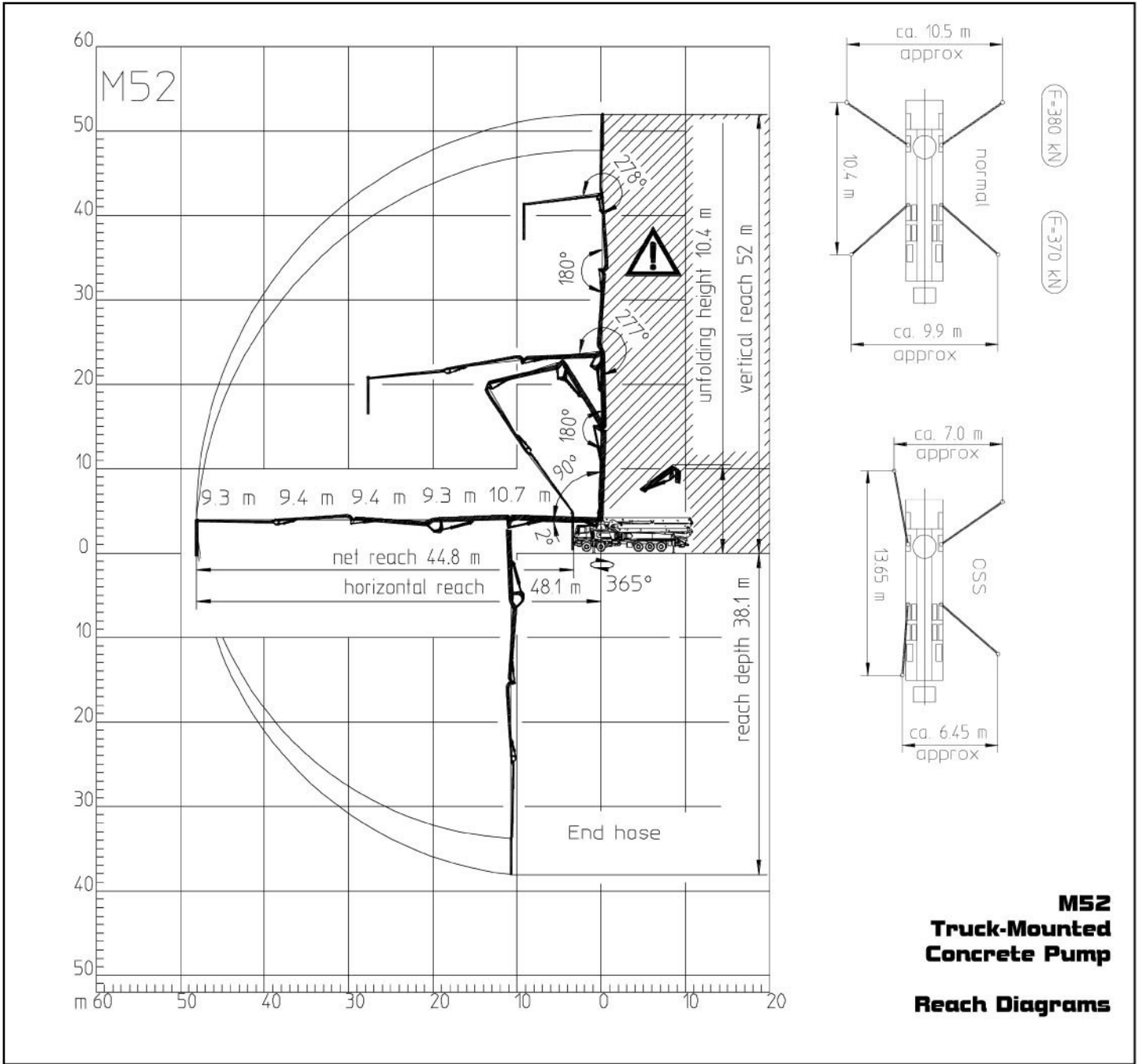
Technical Data

Boom M 52			
Reach height	m	52.0	
Horizontal reach	gross	m	48.1
	net	m	44.8
Reach depth max.	m	38.1	
Unfolding height	m	10.4	
Number of arms	5		
Folding system	Multi-Z fold (MZ)		
Delivery line	DN 125 – 5 ½ "		

Pump		BSF	.16 H
Rod side	Output	m ³ /h	160
	Delivery pressure	bar	85
Piston side	Output	m ³ /h	108
	Delivery pressure	bar	130
	Delivery cylinder	∅ mm	230
	Stroke	mm	2100

Decibel rating 117dB / 114dB
CE Conformity prEN 12001

M52 Truck-Mounted Concrete Pump



Head Office. Brooks Lane, Middlewich, Cheshire CW10 0JQ

Tel: **01606 833333** Fax: **01606 836027**

Email: pumping@pochins.plc.uk

Web Site: www.pochins.co.uk