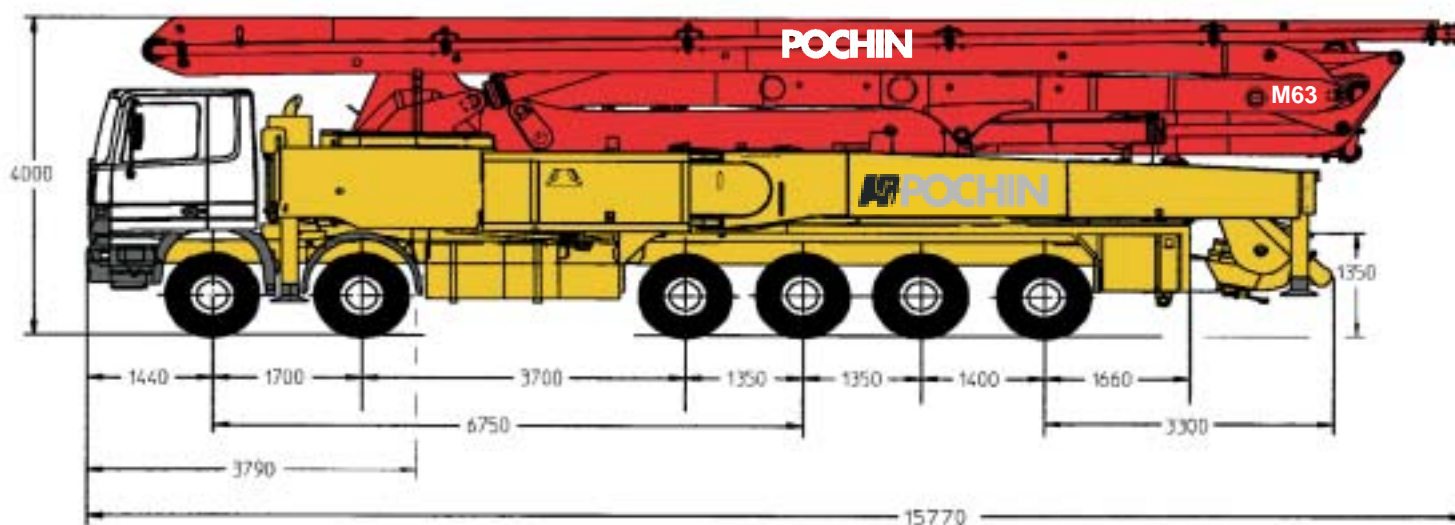


Technical Data Sheet

Truck-mounted concrete pump

BSF 63.16H

Output up to 160 m³/h
 Delivery Pressure up to 130 bar



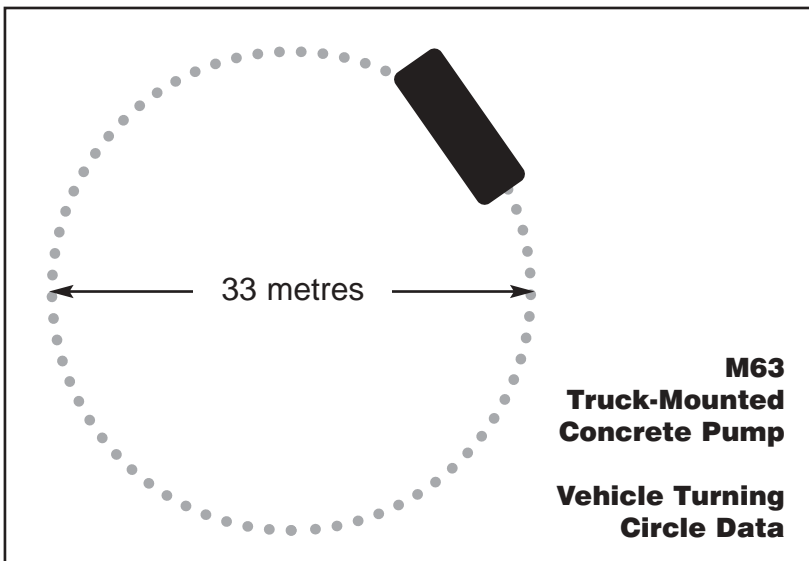
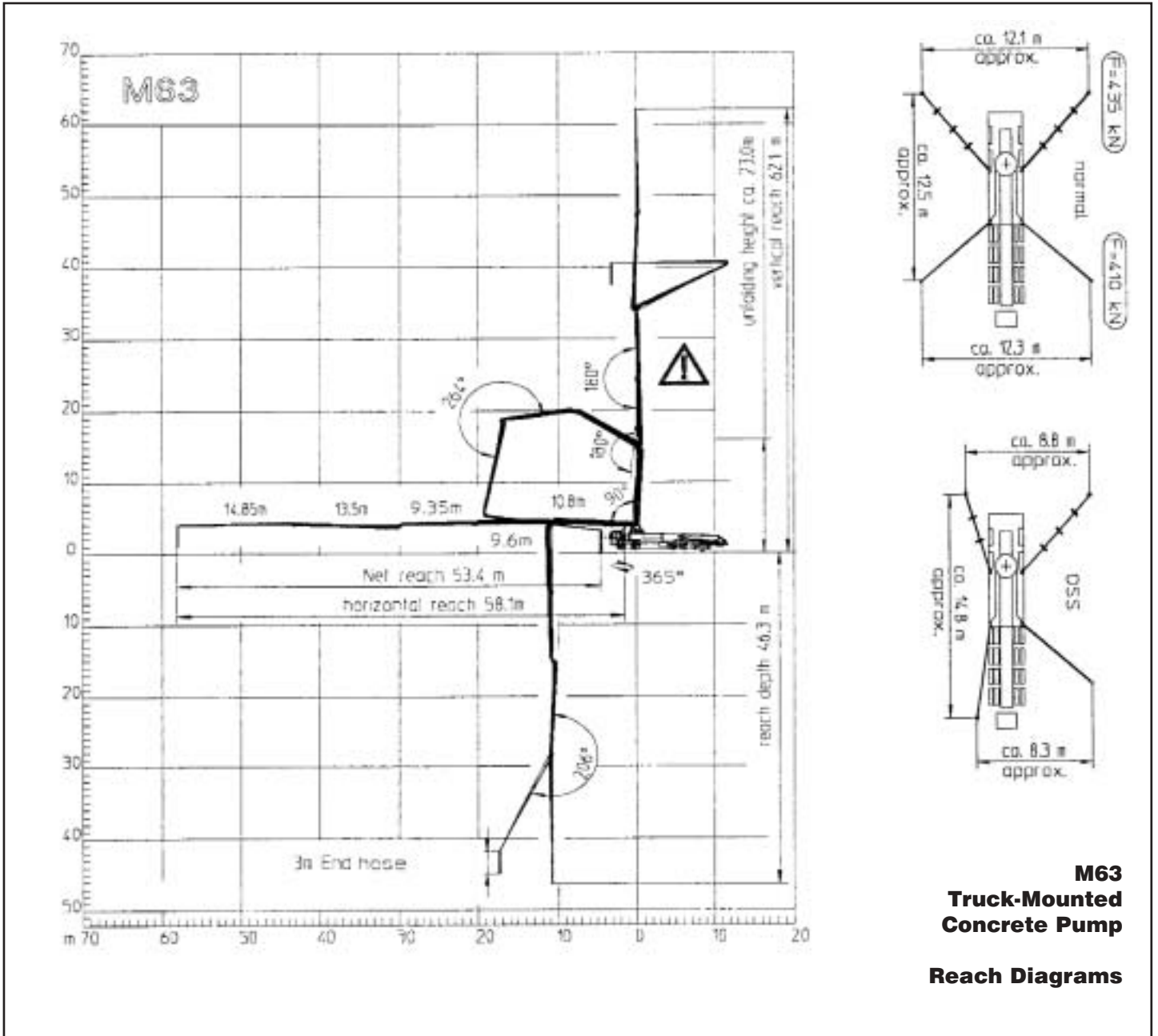
Technical Data

Boom M 63 - 5			
Reach height	m	62.2	
Horizontal reach	gross	m 58.1	
	net	m 53.4	
Reach depth max.	m	46.3	
Unfolding height	m	23.0	
End hose length	m	3	
Number of arms	5		
Folding system	Roll-Z-folding (RZ)		
Delivery line (Standard)	DN 112/5.5		

Pump		BSF	.16 H
Rod side	Output	m ³ /h	160
	Delivery pressure	bar	85
Piston side	Output	m ³ /h	108
	Delivery pressure	bar	130
	Delivery cylinder	∅ mm	230
	Stroke	mm	2100

Decibel rating 117dB / 114dB
 CE Conformity prEN 12001

M63 Truck-Mounted Concrete Pump



POCHIN
Concrete Pumping

Head Office Brooks Lane,
Middlewich, Cheshire
CW10 0JQ

Tel: **01606 833333**

Fax: **01606 836027**

Email: pumping@pochins.plc.uk

Web Site: www.pochins.plc.uk