

concrete pumping

POCHINPOST

winter 2007

HEAD OFFICE:

Brooks Lane
Middlewich
Cheshire CW10 0JQ

T: 01606 833 333

F: 01606 833 331

E: enquiries@pochins.plc.uk

www.pochins.plc.uk

Raising the Standard

“Pochin’s has been instrumental in bringing about the new standard...”

Pochin is recognised across the construction industry for our expertise in concrete pumping, but now we have used that expertise to help establish the UK’s first ever code of practice for the safe operation of concrete pumps.

The new BS 8476 Code of Practice is the result of a collaboration between Pochin’s and the Construction Plant

Hire Association’s Concrete Pumping Interest Group, which is chaired by David Pochin. The outcome is an industry-wide standard, recognised by the Health & Safety Executive, which will form a safety benchmark for all those involved in concrete pumping.

Comments David Pochin: “Safety is always a high priority at Pochin’s and we have

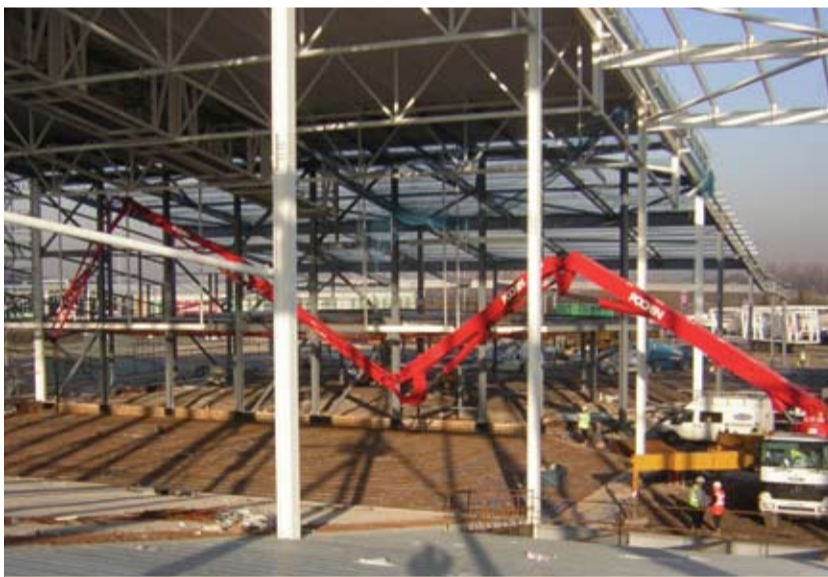
used the benefit of our experience to feed into this new safety code of practice. It means that all sites and all those involved in the sector will now be working to the same safety regulations.

“Pochin’s has been instrumental in bringing about the new standard and we look forward to seeing the enforcement of the regulations and procedures across

the UK to help improve the safety of all concrete pumping activities.”

Pochin has sent copies of the new BS 8476 Code of Practice to all its customers’ safety officers, to ensure that there is a better understanding of the requirements to operate concrete pumping equipment safely and responsibly.

It’s (S)now Problem



POCHIN’S ON SITE AT CHILL FACTORE

Known as a pursuit of the rich and famous, skiing usually involves a trip to the Alps, or even the Rockies. But now would-be skiers from across the North West can combine an afternoon’s skiing with a trip to the shops as the UK’s biggest indoor ski centre, ‘Chill FactorE’ opens opposite the Trafford Centre.

The North West’s own ‘Alpine Village’ which opened in November this year, uses real snow to attract the crowds. Pochin’s used around 1,800m³ of concrete to create the slope as district manager, Gareth Hesketh comments: “Creating a 180m tall dry ski slope is not the kind of brief we receive every day and was something that we had never tackled before. We worked closely with the contractor, GTAS, to agree a method for pouring the concrete, and came up with the solution of inserting the hose through the middle of the ramp.”

Pochin’s completed the concrete pour in stages over a three month period using a 52m boom inserted mid way through the depth level. The result is a giant 100m x 180m concrete structure that provides a snowy winter wonderland for the North West all year round.



THE SKI-SLOPE STARTS TO TAKE SHAPE

Pochin Makes A Splash with Black & Veetch

Pochin has begun building a relationship that is set to last after picking up a five year supply deal with contractor, Black & Veetch.

Black & Veetch is the contractor responsible for all re-development, construction and repair work across water company Severn Trent’s sewerage and wastewater treatment plant portfolio. The contract covers a substantial geographical area encompassing both the East and West Midlands and part of the West country – so Black & Veetch needed a concrete pumping specialist they could trust.

Following a competitive tender, Pochin’s was selected as the concrete pumping specialist for all Black & Veetch’s Severn Trent jobs, kicking off the new agreement at Strongford Waste Water Treatment Works in Stoke-on-Trent with the redevelopment of the waste water cleaning house.

Comments Pochin district manager, Gareth Hesketh: “This is a major contract win which will see us on site on a wide variety of projects ranging from small infrastructure repairs to large scale treatment works construction programmes. Our new working relationship has kicked off successfully with the Strongford project and we look forward to building on this over the next five years.”



STRONGFORD WASTE WATER TREATMENT WORKS, STOKE-ON-TRENT

It's Pouring In Bristol



ON SITE FOR COSTAIN, BRISTOL

Last summer we didn't have enough rainfall, and this year we've had rather too much, but, whatever the weather, water companies need to ensure our water supply is managed efficiently with high quality reservoirs.

With this in mind, Bristol Water selected Costain's as the main contractor to build a 40-mega-litre reservoir to supply most of Bristol's drinking water. Concrete specialist, Steve Lee Form Work, was appointed as subcontractor and Pochin was brought in to provide the pumps for the 10,000 m3 of concrete required.

Explains Adrian Sprake, district manager: "This was a really significant job, not only because of the volume of concrete involved but because of the importance of the reservoir in supplying drinking water to one of the UK's largest cities. More than 20 pours were completed in total using 32m and 52m booms, and the reservoir is now almost ready to be commissioned."

The six-month scheme was completed in parallel with another project to reline the pipe from Chew Valley Lake to the water treatment works next door to the new reservoir. As the reservoir will be supplied by water from the picturesque Chew Valley, 11 miles outside of Bristol, the two sets of works will completely overhaul the fresh water supply infrastructure for Bristol.

"We might not be able to second guess the British weather," adds Adrian, "but the concrete has certainly been pouring in Bristol this year."

Pochin Players Score Rugby Win

They say good things come to those that wait, and for Pochin's long association with Holmes Chapel RUFC, it's been a 22-year wait to win a trophy.

But the long wait made victory all the sweeter for Pochin's current team members and alumni alike when Holmes Chapel 2nd XV beat rivals Ashton on Mersey, 2nd XV to win the 'Halbro Plate Final' at Heaton Moor RUFC in May.

Mark Hatton is Vice Captain of Holmes Chapel 2nd XV, when he's not busy with his day job as surveying director, of Pochin (Contractors) Ltd. "It was one of the most competitive and physically demanding games we have ever played," said Mark, "and it was an extremely close fought game under very hard conditions, which makes our 16:13 win even more satisfying."

Former Holmes Chapel player, Pochin Concrete Pumping director, David Pochin, joined the hundreds of supporters on the sidelines for the match. He commented: "Reaching the final is testament to all the players and, as club sponsor, we wish both Holmes Chapel RUFC 1st XV and 2nd XV good luck for the forthcoming season and defence of the Halbro Plate."



HOLMES CHAPEL 2ND XV CELEBRATE AFTER WINNING THE HALBRO PLATE FINAL

An In'spire'd Solution

The Pochin's team is used to coming up with concrete pumping solutions to meet its clients' needs, but it's not every day we're charged with protecting almost 1,000 years of history into the bargain!

But that was a critical aspect of the job at Lincoln Cathedral when contractor UCS Civil Engineering brought Pochin's in to overcome the many challenges inherent in working with such a historic and prestigious building.



M52 ON SITE AT LINCOLN CATHEDRAL

Explains Pochin area manager, John Stone: "UCS needed to get around 60m3 of concrete into the cathedral's courtyard area for use in the construction of a new restaurant and cloakroom area. Ordinarily, the easiest and most cost-effective way to move the concrete would be through pipes laid along the floors. However, the floors in question are almost 1,000 years old and are covered in priceless tiles and brasses. This meant using any method that could conceivably damage the building if there were a problem was out of the question. Luckily, Pochin's had the expertise to offer the contractor a less risky option."

Pochin's solution was to use a 52m boom to pump the concrete around the cathedral's façade and into the courtyard. The task was not simple, as the team usually needs a 10 sq m area to set up the boom and the whole project had to take place within the restricted area of the cathedral grounds. However, the team set up the boom within around an hour and five hours later the pumping operation was completed.

"Lincoln Cathedral is so huge that it's a prominent landmark for miles around," John continues, "but it was our big red boom that caught everyone's eye that day."

Pochin's Drive Innovation With 'Steady Hose'

A new type of placing hose has been designed and developed by Putzmeister, the concrete pump manufacturer, in conjunction with Pochin's.

The hose is flexible at the top where it adjoins the placing boom pipe work to allow free movement by an operative, but progressively becomes more rigid towards the end to prevent any unwanted movement.

The 'steady hose' which is standard issue on all Pochin machines has been widely adopted throughout Europe and was recently awarded a European Innovation Award earlier this year at the Bauma Construction Show.

David Pochin adds. "We are proud to have been involved in the production of this innovative product and it further demonstrates our determination for continuous improvement".

White Queen Gleams Again



THE WHITE QUEEN BACK TO ITS FORMER GLORY

It's a few years now since director of Pochin Concrete Pumping, David Pochin, gained his HGV license, and he never dreamed at the time that the vehicle he learned in would one day be renovated by a colleague.

But that's exactly what's happened, with classic vehicle enthusiast and workshop foreman, Harold Lomas, taking on the job of renovating the 'White Queen', an old foden articulated truck.

Commented Harold: "There is something really special about bringing an old vehicle back to life and after renovating a classic tractor I was delighted to have the opportunity to give the White Queen a much-needed facelift. Now she is as good as new and her former driver, David Pochin, is just one of her many admirers."

The White Queen can be seen along with Harold's Gardner diesel engine at many of the North West's classic vehicle shows.